

Food Forest / Speisewald

How can we bring up a conversation about food through challenging people's conception of public space?

Problem How can cities feed themselves in the future? Long term goal - Mega scale
 How can we change the relationship we have with our food and develop a sense of responsibility and engagement amongst citizens? - Micro scale

Abstract More than half of the world population lives in cities, and this number is expected to increase. Cities raise many environmental and social issues such as poor biodiversity, lack of resilience, food insecurity and disconnection with nature. Monocultures and conventional agriculture are destroying ecosystems, the soil and the climate. We believe that alternatives for our food futures are in our hands.

spaces, the Speisewald, strategically positioned in Ebertplatz to support the conversion of this controversial place in Cologne, will connect all generations and backgrounds for collaboration in all stages of construction and maintenance, supported by a digital platform. The Food Forest is an experimental pilot project that will challenge our experience of public space and foster the changing image of Ebertplatz into a cultural, participatory and interactive space.

Our integrative solution is to grow a Food Forest (Speisewald) in the Theodor-Heuss-Park in Cologne by the year 202x. A Food Forest is an ancient model of food production that simulates the natural system of a forest creating a multilayered, resilient, self-sustainable and incredibly productive edible space. Through the revitalisation of blank green

This system is made to spread across the green ring of Cologne, fully supported by the crown-like public transport infrastructure of the city. In the future, the Speisewald will provide affordable healthy food for the neighbourhood and demonstrate a community supported ecosystem that can care for people and land at the same time.



Keywords #FoodForest #Biodiversity #socialengagement #education #local food production #self-sufficiency #public space

Data Which data / information are you using? Creating? Sharing?

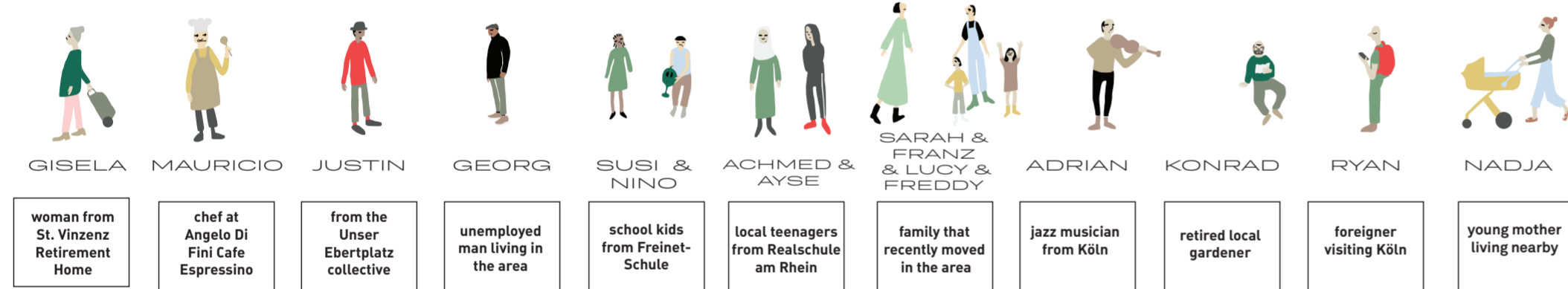
Stakeholder City of Cologne
 Permaculture Experts: Claire & Alexandre, Treenick, Freinet-Schule-Köln and Realschule am Rhein
 Stiftung St.Vinzenz-Haus BGmbH
 Local restaurants & cafés
 Active working groups at Ebertplatz (AG Begrünung Unser Ebertplatz)
 Bürgerverein Kölner Eigelstein e.V.
 Project „Essbare Stadt“ - Cologne Dietarian Committee

Partner Birgit Scherer - VHS Urban Garden Turner Hof
 Claire - Food Forest Expert in Taiwan

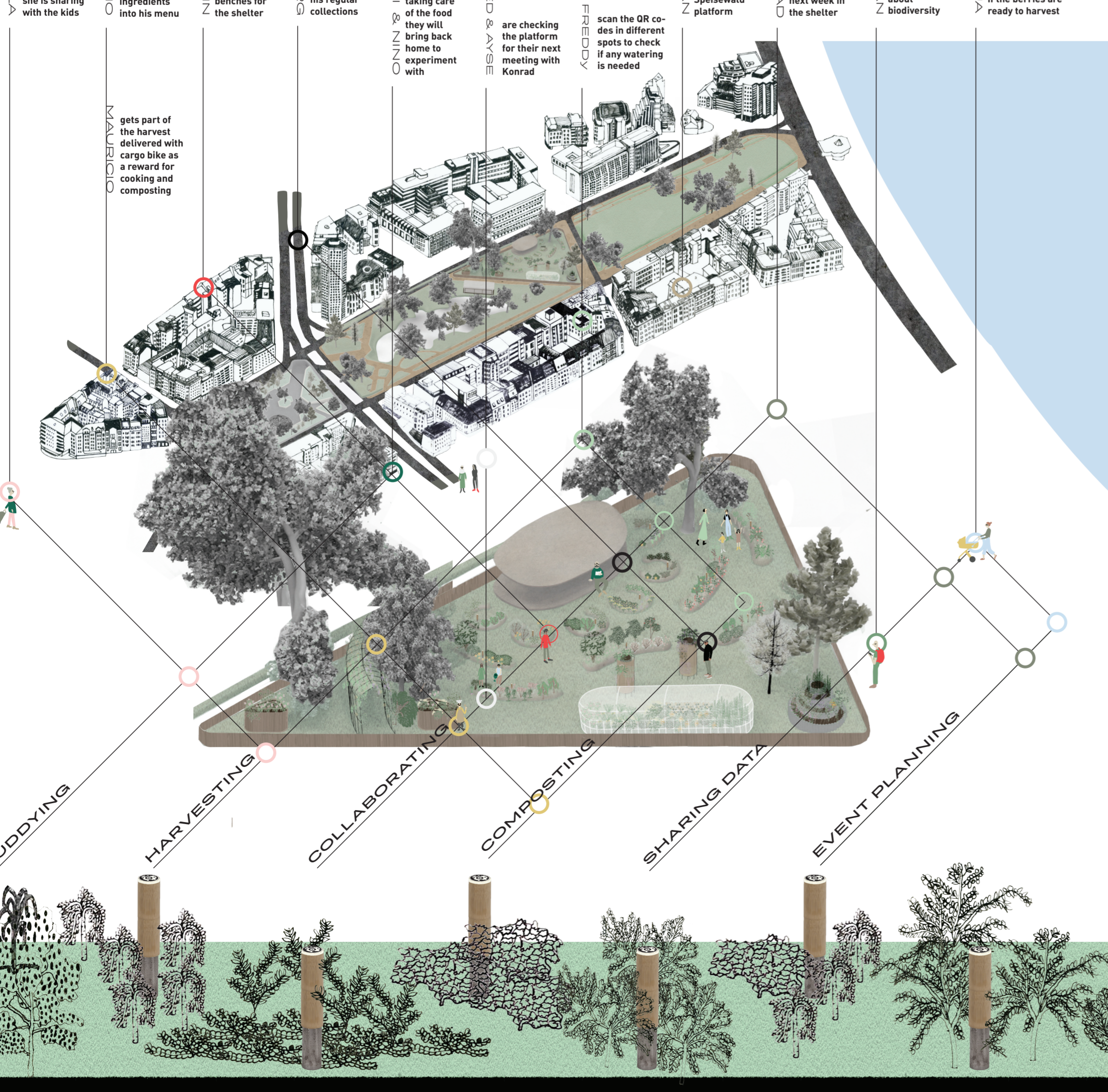
Cases Ferment the City Food Forest in Hsin-chu Ann Chung's independent rice flour factory



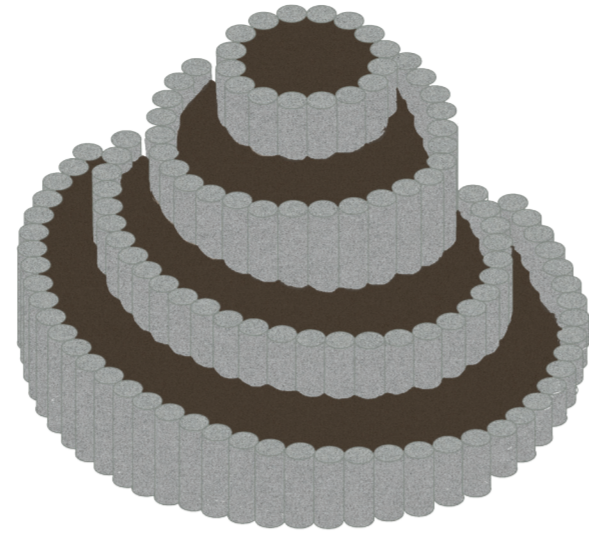
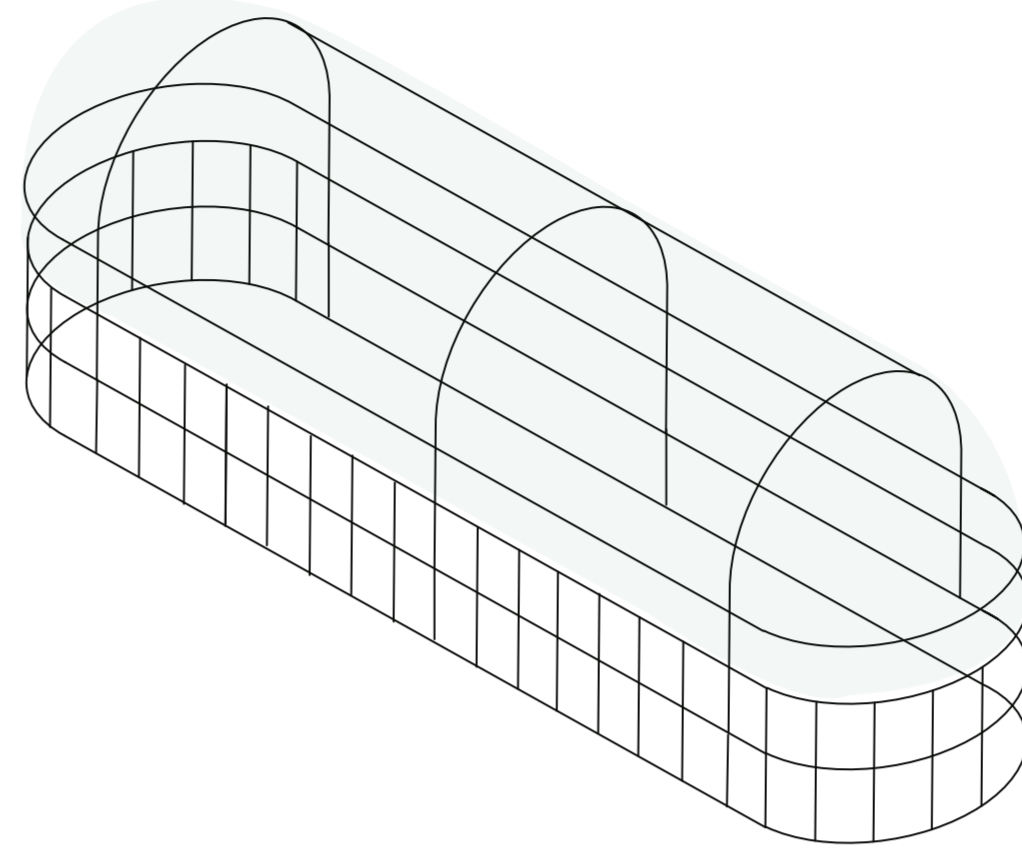
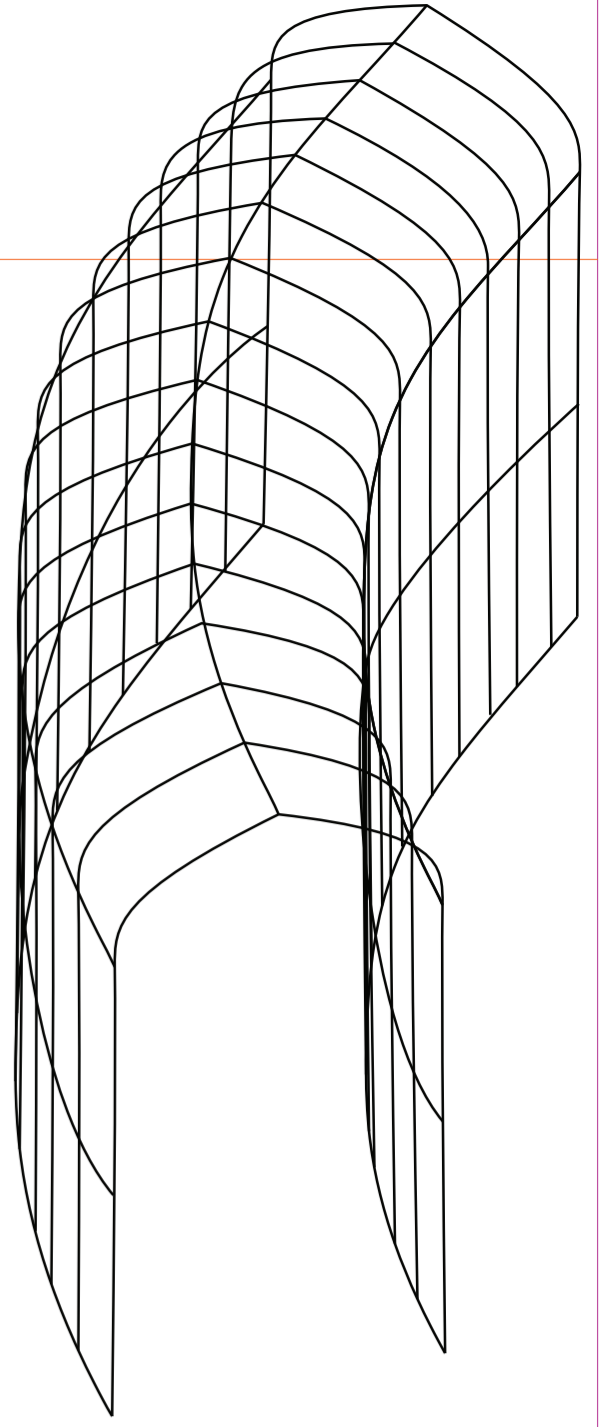
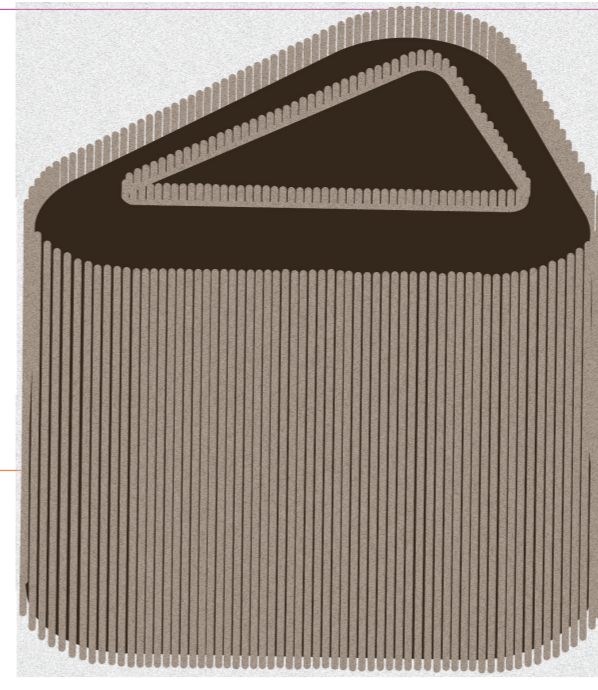
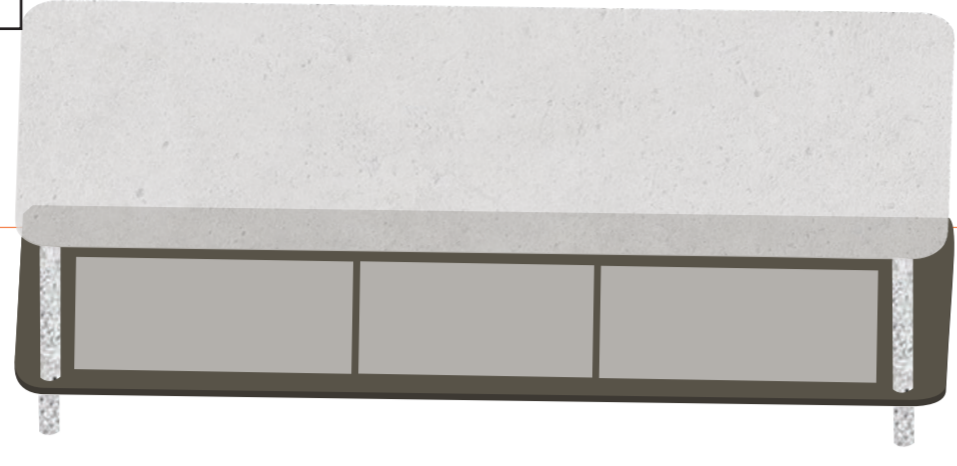
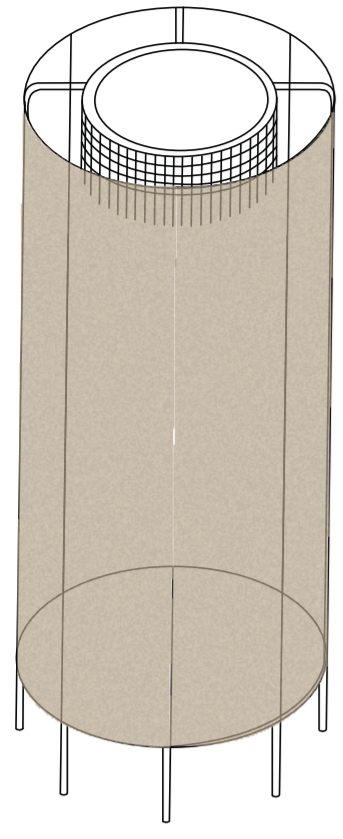
KÖLNER SPEISEWÄLDER



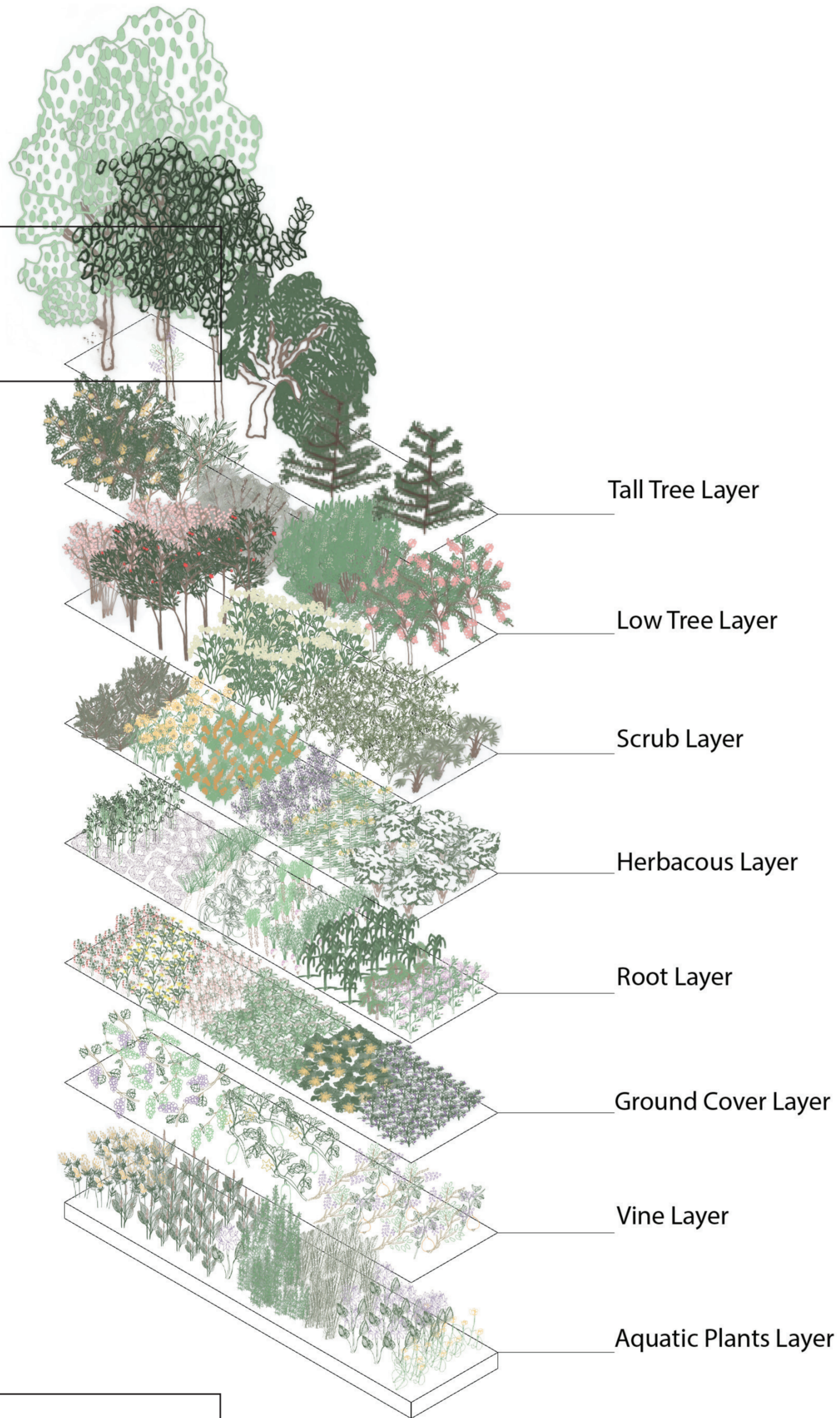
GISELA woman from St. Vinzenz Retirement Home	MAURICIO chef at Angelo Di Fini Cafe Espresso	JUSTIN from the Unser Ebertplatz collective	GEORG unemployed man living in the area	SUSI & NINO school kids from Freinet-Schule	ACHMED & AYSE local teenagers from Realschule am Rhein	SARAH & FRANZ & LUCY & FREDDY family that recently moved in the area	ADRIAN jazz musician from Köln	KONRAD retired local gardener	RYAN foreigner visiting Köln	NADJA young mother living nearby
---	---	---	---	---	--	--	--	---	--	--



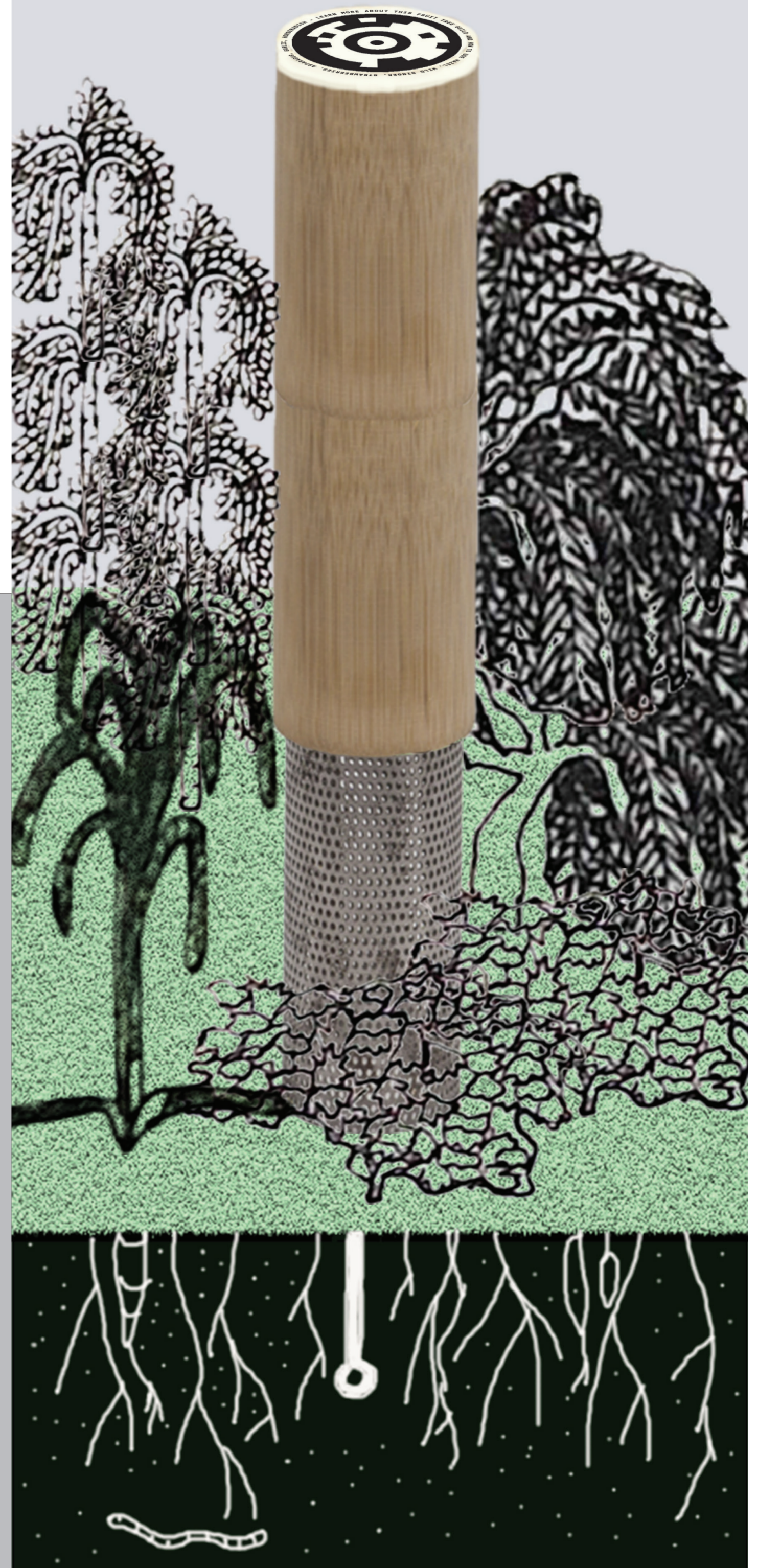
COMPONENTS OF THE SPEISEWALD SYSTEM



THE VEGETATION LAYERS



Bamboo tubes planted amongst the Speisewald are hiding tensiometers connected to the Speisewald platform, informing in real-time about the soil moisture and quality, and distributing tasks. Each tensiometer is linked to a group of plants (a guild) and is updated by experts and users on the online database of our network with the plant information and uses. This collaborative platform, fed with the growing knowledge of the community will remain and expand as the Speisewald spread across the green belt of Köln.



EBERTPLATZ

