



Information for International Students

International Office



Fachhochschule Köln
Cologne University of Applied Sciences

www.international-office.fh-koeln.de

Legal Notice

Publisher

Fachhochschule Köln / Cologne University of Applied Sciences
Referat für internationale Angelegenheiten
Elisabeth Holuscha
Claudiusstraße 1
50678 Köln
www.fh-koeln.de

Layout

Hannes Jung

Editorial Department

Christina Dimitrowa, Kristina Plaga,
Patrick Toussaint

Print

Häuser KG

Circulation

1000 copies
July 2011

Table of Contents

CONTACT

GREETINGS FROM THE INTERNATIONAL OFFICE

GENERAL INFORMATION ABOUT THE FACHHOCHSCHULE KÖLN 1

ADMISSION REQUIREMENTS 2

Degree Program	2
German Language Skills	3
German Language Course	4
Preparatory Course	5
Cologne Prep Class	5
Advanced Entry	7

SPECIAL ADMISSION AND REGISTRATIONS REQUIREMENTS 8

Internship	8
Aptitude Tests	9
Additional Requirements	9
Selection Process	10

APPLICATION PROCESS FOR FOREIGN APPLICANTS TO THE UNIVERSITY 11

The uni-assist Application Process	11
Application Deadline	11
Special Conditions	12
Processing Fee	12
Documents to be Included	13
Application Address and Contact	14
Applications to Multiple Universities	14
Application Process – Continued	15
Special Conditions for China, Mongolia and Vietnam	15
Check list – All Set?	16

ADDITIONAL INFORMATION 17

Visa	17
Housing	18

UNIVERSITY ATTENDANCE COSTS 19

Tuition Fees and Semester Fees	19
Living Expenses	19
Financing your Studies	19
BAföG	20
Scholarships	20

WEBSITES OVERVIEW 20

VISIT US 21

Adresses & Direction Sketches	21/22
-------------------------------	-------

International Office

Office Building

International Office
Claudiusstraße 1
50678 Köln
Room: A1.56

Tel.: +49 (0)221 / 8275 -3771/ -3772
E-Mail: international@fh-koeln.de
www.international-office.fh-koeln.de

Mailing Address

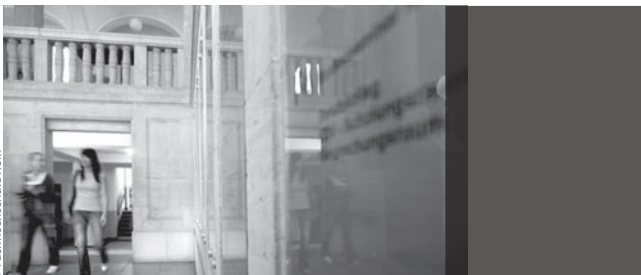
Fachhochschule Köln
International Office
Gustav-Heinemann-Ufer 54
50968 Köln

Information Office Business Hours

Monday – Friday: 9:00 a.m. – 4:00 p.m.

@ international-office.fh-koeln.de

© Fachhochschule Köln




Zentrale Studienberatung (Student Counseling Center)

Fachhochschule Köln
Zentrale Studienberatung
Claudiusstraße 1
50678 Köln
Room 13

Tel.: +49 (0)221 / 82 75 -3786
E-Mail: studieninfos@fh-koeln.de
www.fh-koeln-studieninfos.de

@ www.fh-koeln-studieninfos.de

Disclaimer: The following information has been assembled very carefully. This information is subject to change on short notice due applicable laws and regulations. Therefore, please understand that no responsibility can be taken for the correctness and completeness of the content.



Greetings from the International Office

Dear prospective student,

We appreciate your interest in studying at the Fachhochschule Köln. This brochure was designed to supply you with crucial information about the admission requirements, the preparatory classes, the application process as well as tips about everything related to studying at the Fachhochschule Köln. Therefore, this brochure is primarily intended for prospective international students with diplomas from foreign countries.

The International Office is at your disposal. For contact information please check the left side of this brochure.

If you have a German school leaving certificate, please ask the Zentrale Studienberatung (Student Counseling Center) which requirements apply to you. The contact is also at the the left side of this brochure.

We look forward to welcoming you at the Fachhochschule Köln soon.

Best Regards

Your International Office

General Information about the Fachhochschule Köln

Founded in 1971, the Fachhochschule Köln is the largest university of applied sciences in Germany. 17000 students (including approx. 3,000 international students) are taught by approx. 400 professors.

Due to the wide variety and high quality of the degree programs offered, as well as the eleven departments and the Institute for Technology and Resources Management in the Tropics and Subtropics (ITT), the Fachhochschule Köln enjoys international popularity and cultivates a variety of relationships with universities in Germany and around the world.

The University includes the main building in Cologne's Südstadt as well as the locations in Köln-Deutz, in Gummersbach, and the new campus in Leverkusen.



Entrance hall of the Fachhochschule Köln,
Claudiusstraße

© Fachhochschule Köln

The trademark of the Fachhochschule Köln are application-oriented teaching, research and development, dynamic development of the degree programs, integrated practical training semesters and a short duration of study. The close connection between science and practice permits current developments to be directly incorporated into the University's activities. The University also consistently meets new challenges in the research and development areas. In addition, the Fachhochschule Köln is an important partner for trade and industry in Cologne and a point of contact for problem solving for companies of all sizes.

Information about the Fachhochschule Köln may be found at:



www.fh-koeln.de

Admission Requirements

Below you will find descriptions of each step of the applicable admission processes as well as some particulars that are crucial to international applicants.

DEGREE PROGRAM

Foreign Diplomas

First, you need to find out whether your foreign diploma is sufficient for studying in Germany, since the school systems differ from country to country. This is why the admission requirements for studying in Germany differ for every country.

Diplomas from European Union countries that qualify students for university admission in their respective countries are generally sufficient for a direct application to a university in Germany.

You can find further information concerning the scholastic qualifications from all countries that qualify you to study in Germany in the information database of the Central Office for Foreign Education ("anabin"):

www.anabin.de »Land wählen »Zeugnisbewertung
»click on the type of diploma you have received



Please note that this is general information.

If your diploma does not directly qualify you to attend a German university and if certain conditions are met, you may apply to a preparatory course or the Cologne Prep Class. You can find out whether you possess the necessary scholastic qualifications by visiting the "anabin" website" (key word: preparatory course/assessment tests).

Information about the preparatory course and the Cologne Prep Class may be found at page 5.

GERMAN LANGUAGE SKILLS

Potential students who have not earned their qualification at a German educational institution must pass the German Language University Entrance Examination for Foreigners (DSH). The DSH framework regulations divides the DSH into DSH I, II and III.

The **DSH II** is accepted as sufficient proof of German language skills for all degree programs at the Fachhochschule Köln.

The **DSH I** with a lower score is currently accepted only for the "Design" bachelor degree program and the "Technology and Resource Management in the Tropics and Subtropics" master degree program at the Fachhochschule Köln.

Master degree programs that are held entirely in English do not require German language skills. This currently applies to the "International Business," "International Management and Intercultural Communication," "Automation & IT" and "Integrated Design" programs. The extra-occupational continuing education programs "Game Development and Research" and "Web Sciences Combined" are also offered entirely in English.

Please look up the language requirements for the respective degree programs prior to your application:

www.fh-koeln.de »Studienangebot

The following certificates may also be used in lieu of the DSH exam:

- Level II of the Language Certificate of the German "Kultusministerkonferenz"
- The "Kleine Deutsche Sprachdiplom" (basic German language diploma) or the "Große Deutsche Sprachdiplom" (advanced German language diploma) of the Goethe-Institut,
- The "Zentrale Oberstufenprüfung" (Advanced Level Examination, ZOP) of the Goethe-Institut or the adult education centers,
- TestDaF with a minimum score of 16,
- Assessment test of a preparatory course or of the Cologne Prep Class or
- Successful completion of a German degree program with duration of at least 6 semesters.

If you are unable to provide any of the above-mentioned certificates when you apply, you can still apply to a degree program at the Fachhochschule Köln by providing the **Zentrale Mittelstufenprüfung (ZMP)** or the **C1 Certificate** of the Common European Framework of Reference (GER). As soon as you are notified of admission to your degree program, you must take the DSH exam (fee required) at the Fachhochschule Köln before classes commence. You may only register after passing the DSH exam.

Please note that a certificate of attendance of a German language course is not sufficient for your application.

GERMAN LANGUAGE COURSE

University applicants who do not have sufficient language skills to be admitted may apply for admission to the preparatory German language course at the Language Learning Center of the Fachhochschule Köln.

However, admission to this language course is only possible if your foreign diploma qualifies you for direct university admission and if you already have solid basic German language skills. You must prove your German skills with at least a **B2 certificate (according to GER)**. A certificate of attendance of a German language course is not sufficient here either.

After one semester, the **“Deutsche Sprachprüfung für den Hochschulzugang” (university language exam, DSH)** must be taken. If you pass the exam, you are exmatriculated and must reapply for admission to your degree program.

The application materials must be sent by

- **June 15 of each year for the winter semester [equivalent: fall semester] or by**
- **December 1 of each year for the summer semester [equivalent: spring semester]**

to the uni-assist examination center in Berlin. You will find information about the application process on page 11.

Admission to the German language course does not guarantee admission to a degree program.

Contact

Fachhochschule Köln
 Sprachlernzentrum
 Betzdorfer Str. 2, 50679 Köln
 Room: ZN3 - 7
 Tel.: +49 (0) 221 / 82 75 - 29 15
 E-Mail: beyzar.goeral@fh-koeln.de
www1.fh-koeln.de/slz



PREPARATORY COURSE

Under certain conditions, university applicants whose foreign diplomas do not immediately qualify them for admission to a degree program at a German university may earn the admission qualification by attending a preparatory course and passing the subsequent assessment test.

The preparatory course offers a variety of core courses, such as humanities, medicine, language, technology or economics. The preparatory course concludes with the assessment test after one year of study and qualifies you for admission to degree programs in the subjects that are associated with the core course you attended.

Information about all preparatory courses in Germany may be found at:

@ www.studienkollegs.de

! Please note that the public preparatory courses in North Rhine-Westphalia have been closed in accordance with a state government decision.

Applicants who possess sufficient language and subject knowledge that was not acquired by attending a preparatory course may take an external assessment test if they meet the requirements.

Please send your application for external participation in the assessment test to the Bezirksregierung Köln (district government of Cologne). They will inform you of locations and dates where you may take the external assessment test.

Contact

Bezirksregierung Köln - Dezernat 43

z.Hd. Herrn Harald Klingel
Zeughausstr. 2-10, 50667 Köln
Tel.: +49 (0)221/ 147 -2493

@ www.bezreg-koeln.nrw.de »Organisation »Abteilung 04 »Dezernat 43
»Externe Feststellungsprüfung (Studienkolleg)

COLOGNE PREP CLASS (CPC)

Since 2009, the Fachhochschule Köln has been offering its own preparatory course, the Cologne Prep Class (CPC), as a successor program to the preparatory course. This ten-month preparatory course is geared towards highly qualified international applicants whose high school diplomas do not directly qualify them for admission to a degree program at a German university.

Application Deadline

June 1 of each year

Course Duration

September 1 to June 30

Course Location

Fachhochschule Köln, Campus Deutz (Betzdorfer Str. 2, 50679 Köln)

Course Fee

5.000 €

Contact

E-Mail: preparation@fh-koeln.de
www.fh-koeln.de/cpc



© Fachhochschule Köln

Cologone Prep Class

By participating in the CPC, students receive a sound subject-related introduction to the respective degree programs for engineering or economics and social sciences. In addition, existing language skills are expanded in the concurrent German language courses. The participants are prepared for the assessment test as thoroughly as possible by the qualified lecturers and through a motivating learning atmosphere.

After successfully completing the assessment test, the graduates of the CPC receive guaranteed admission to a degree program in the areas of engineering or economics at the Fachhochschule Köln. Moreover, the assessment test qualifies applicants for admission to bachelor degree programs at universities of applied sciences and universities everywhere in Germany.

ADVANCED ENTRY

University applicants who have already commenced their studies at a university may continue their studies in the applicable degree program at the Fachhochschule Köln under certain conditions. However, the examination board of the respective degree program must first give credit for courses and exams that were taken previously and that are equivalent to one or more semesters.

Admission with advanced entry is granted by the Fachhochschule Köln.

For some degree programs at the Fachhochschule Köln, so-called admission restrictions apply to the advanced entry candidates as well, meaning that only a limited number of students may be admitted to those semesters.



© Fachhochschule Köln

The application for admission with advanced entry must be submitted by

- March 15 of each year for the summer semester or by
- September 15 of each year for the winter semester

at the Fachhochschule Köln. Applicants are notified of the possibility of admission starting in January for the summer semester and starting in July for the winter semester.

Additional information about the application materials is available at:



www.studium.fh-koeln.de »Studiengang-/Hochschulwechsel

Special Admission & Registration Requirements

INTERNSHIP

Some degree programs at the Fachhochschule Köln require proof of a basic internship for admission. The duration of the internship may vary from eight weeks to one year, depending on the degree program.

You can find the specific requirements for the basic internship in the internship guidelines of the respective department websites.

Please note that the University is not able to place students in internship positions. Potential students must apply to companies themselves and must refer to the internship guidelines of the respective departments.

Proofs of internship from foreign countries must be accepted by the internship representative of the respective department in advance. This is a prerequisite for registration.



APTITUDE TESTS

For certain degree programs, university applicants must provide proof of an aptitude test as a special admission requirement. Currently, the following degree programs require an aptitude test:

Department 02:

- Restoration and Conservation (Bachelor)
- Integrated Design (Bachelor and Master)
- European Studies in Design (Bachelor and Master)

Department 03:

- Languages and Economics (Bachelor)
- Specialized Translation (Master)
- Conference Interpretation (Master)
- Terminology and Language Terminology (Master)
- International Management and Intercultural Communication (Master)

Department 04:

- Insurance Business (Master)

Department 05:

- Architecture (Bachelor and Master)

Department 10:

- Product Design and Process Development (Master)

Registrations for the aptitude tests should generally be submitted directly to the applicable department or institute.

Please look at our website well in advance of your application to stay updated about possible changes as well as current application deadlines.

Further information can be found on the websites of the Offices of Student Affairs at:

www.studium.fh-koeln.de »Service »Fristenpläne / Vorlesungszeiten

ADDITIONAL REQUIREMENTS

Some degree programs also require proof of English language proficiency. This is usually provided through the TOEFL test with a score of 500 (computer-based test), a score of 218 (paper-based test) or a score of 79-80 (internet-based test). Further information about the tests as well as test centers can be found at:

www.ets.org

Other accepted English language proficiency tests include the Cambridge Certificate in Advanced English as well as the IELTS (International English Language Testing System) with a minimum score of 6 or 6,5.

If you graduated from an academic institution in an English-speaking country or have completed a degree program in English, you do not need to provide proof of English language proficiency, of course.

The GMAT (Graduate Management Admission Test) is required for the “International Business” (minimum score: 400) and “International Management and Intercultural Communication” (minimum score: 500) master degree programs. The GRE (Graduate Record Examination) may also be used in lieu of the GMAT. The GMAT score must be submitted at the time of application.

Information about the GMAT can be found at:

www.mba-gate.de



www.gmat.com

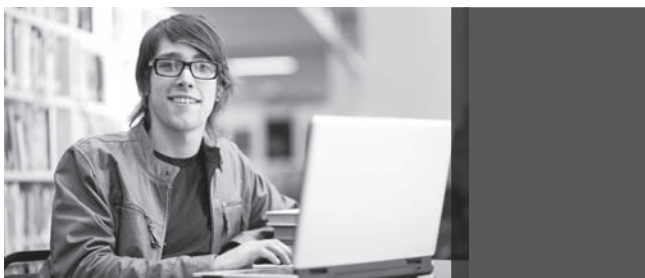


SELECTION PROCESS

Many of the degree programs we offer are subject to admission restrictions. This means that there are more university applicants than available spots and thus a selection process must take place.

Admission can be guaranteed only for degree programs that are not subject to an admission restriction and once all requirements are met.

Please look at our website or contact the International Office well in advance to your application to find out whether the degree program you wish to apply to is subject to an admission restriction.



Application Process for Foreign University Applicants

THE UNI-ASSIST PROCESS

International university applicants that have earned their university entrance qualification (e.g. Abitur, A-Levels, High School Diploma, Baccalearat, Gaokao or similar) in a foreign country must submit their documents to the uni-assist service office in Berlin for pre-qualification.

The Arbeits- und Servicestelle für internationale Studienbewerbungen evaluates the university applications for a processing fee to ensure that all admissions requirements are fully met and then enters the applicant data into the computer system.

The advantage of the uni-assist application process is that you can apply to multiple "uni-assist universities" but only need to submit all your application materials once.

German citizens that have earned their university entrance qualification in a foreign country do not apply via the uni-assist process but through the online application of the Fachhochschule Köln. Please research in advance whether your foreign diplomas are sufficient for direct admission to your degree program.



www.studium.fh-koeln.de »Studienbewerbung« (Online-) Bewerbung

APPLICATION DEADLINE

For the preparatory German language course (DSH course)

- on December 1 each year for the summer semester
- on June 15 of each year for the winter semester

For bachelor degree programs, the following deadlines apply in most cases:

- January 15 of each year for the summer semester
- July 15 of each year for the winter semester

Please note: The application deadlines may vary for each degree program. Please look these up well in advance of your application at:



www.fh-koeln.de »Studienangebot / Bewerbung

SPECIAL CONDITIONS

Please note that some degree programs require an aptitude test (see page 9) before you apply to uni-assist. In those cases, you must submit proof of passing the aptitude test with your application.

For the master degree programs Since the application deadlines for the individual master degree programs vary greatly, please look them up well in advance of your application at:

www.fh-koeln.de »Studienangebot/Bewerbung



We recommend that you submit your application to uni-assist at least six weeks before the applicable deadline in order to take care of any outstanding questions and to guarantee fast processing. Missing documents may not be submitted after the deadline!

PROCESSING FEE

A processing fee applies for the pre-qualification of an application through the uni-assist process.

- **€68 for non-EU citizens and**
- **€43 for EU citizens and for applicants from Iceland, Liechtenstein and Norway**
- **If you are applying to additional universities that also require the uni-assist process, you must pay €15 for every additional application. A current list of all “uni-assist universities” may be found online at: www.uni-assist.de.**

Please transfer the payment for the processing fee directly to the uni-assist bank account before you submit your application:

Bank Account Details

Bank Account No.:	523 749 001
Routing No.:	100 708 48
Bank:	Berliner Bank, subsidiary of Deutsche Bank
IBAN:	DE10100708480523749001
BIC/SWIFT-Code:	DEUTDEDB110

As reason for payment, please indicate

- Your country of origin,
- Your date of birth (dd.mm.yyyy),
- Your last name,
- Your first name and
- The semester during which you would like to commence your studies (e.g. WS 2011/12).

If you already have an uni-assist applicant number, please indicate it as well.

If you send payment for the processing fee from abroad, please note that you will need to pay the bank transfer fees as well.

If you are paying via credit card (VISA or MasterCard) or via Western Union or Money Gram from abroad, please carefully read the information at:

@ www.uni-assist.de »Kosten

DOCUMENTS TO BE INCLUDED

- Application form (www.uni-assist.de Downloads Application for Admission)
 - Copy of the high school diploma and of the university entrance exam, if applicable
 - If applicable: copy of university transcript and university diploma from your home country
 - Applicants from China, Mongolia and Vietnam: original of APS certificate
 - For the German language course: successful completion of intermediate level II (B2) at a minimum
 - For the degree program: successful completion of intermediate level III (C1) at a minimum
- » A certificate of participation is not sufficient!**
- Curriculum Vitae in table format
 - Copy of your passport (only the page showing your personal data)
 - 1 passport photo
 - Copy of payment receipt (for payment of the processing fee to uni-assist)
 - Proof of successful completion of the aptitude test, if applicable (only required by certain degree programs)

Foreign-language documents must be translated into German by a state-certified translator unless they are in English or French. The documents must be submitted in the source language in addition to the translated versions.

All copies must be **officially certified**. Please do not send originals because the documents you submit will not be returned to you.

The application materials will be examined by uni-assist only once all documents and the processing fees have been received in full.

APPLICATION ADDRESS AND CONTACT

Please send your application to the following address:

Fachhochschule Köln

c/o uni-assist e.V.

Helmholtzstr. 2-9

10587 Berlin.

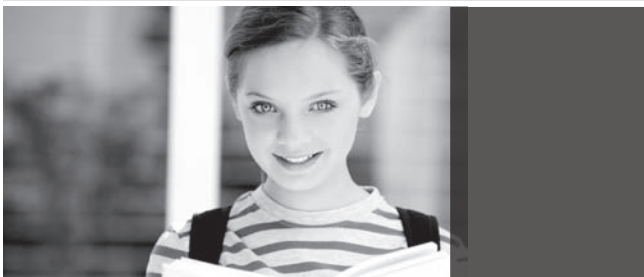
If you have questions about your application, please feel free to contact the uni-assist team..

E-Mail: service@uni-assist.de

Tel.: +49 (0)30 / 666 44 345

Fax: +49 (0)30 / 666 44 390

© iStock



Please have your applicant number handy if you call uni-assist to ask specific questions about your application.

APPLICATIONS TO MULTIPLE UNIVERSITIES

If you would like to apply to multiple universities at the same time, please check whether the other university/universities you wish to apply to require(s) the uni-assist process as well. You will find a current list of all universities on the uni-assist website.

www.uni-assist.de »uni-assist Hochschulen



If you apply to multiple uni-assist universities, you only need to provide one copy of the required application materials. However, you must submit a separate application form or admission application for each university.

Careful: Required documents may be different for each university and each degree program. Application deadlines can also be different for each uni-assist university. Therefore, please make sure to submit your documents to uni-assist for all universities in a timely manner.

APPLICATION PROCESS – CONTINUED

Please submit your email address if you have one. This enables uni-assist to communicate with you much faster and more reliably to take care of any remaining questions.

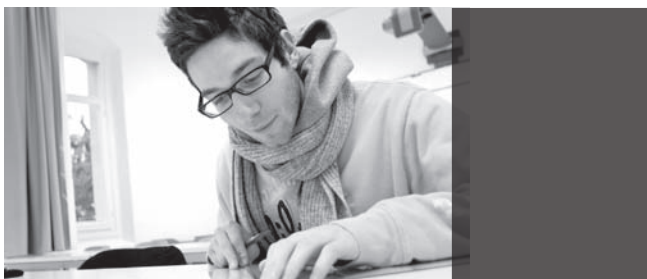
If your documents meet the official admission requirements, they will be electronically forwarded to the Office of Student Affairs of the various universities. However, this does not constitute admission because the Office of Student Affairs must now examine your documents according to content quality criteria. If you meet these criteria, you will receive an admission letter from the Fachhochschule Köln. These letters are sent out once the official application deadline has passed.

Uni-assist will inform you if your documents do not meet the official admission requirements and you may submit the missing documents before the application deadline.

Please note that in case that you decide not to attend our university, uni-assist keeps your application materials for only one year. After one year, your documents are destroyed. Uni-assist is generally unable to mail back or hand back your documents, so please **never send your original diplomas to uni-assist.**

SPECIAL CONDITIONS FOR CHINA, MONGOLIA AND VIETNAM

All applicants from China, Mongolia or Vietnam must submit a certificate from the Akademische Prüfstelle (Academic Examination Office, APS) with their application. The APS is an institution of the German embassy's department of culture in the applicants' respective home countries. The APS checks whether potential students meet the requirements for admission to a German university and the authenticity of the transcripts is verified.



Additional information about this process can be found on the websites of the German embassies:

Department of Culture of the German Embassy in Beijing

Akademische Prüfstelle

Landmark Tower 2, Büro 0311
8 North Dongsanhuan Road
Chaoyang District
100004 Beijing
E-Mail: info@aps.org.cn
www.aps.org.cn

Department of Culture of the German Embassy in Hanoi

Akademische Prüfstelle

29 Tran Phu
Q. Ba Dinh
Hanoi
E-Mail: ku-101@hano.auswaertiges-amt.de
www.hanoi.diplo.de

Department of Culture of the German Embassy in Ulan Bator

Akademische Prüfstelle

Baga Toiruu-2
Negdsen Undestnii Gudamj
Ulan Bator 14201
E-Mail: aps.ulanbator@gmail.com
www.ulan-bator.diplo.de

CHECKLIST – ALL SET?

- ✓ University entrance certificate? (“Anabin” database)
- ✓ Language skills sufficient?
- ✓ Internship required?
- ✓ Aptitude test required?
- ✓ Additional language skills relevant?
- ✓ Deadlines noted?
- ✓ Application process chosen correctly?

Please look up the admission requirements for each of the degree programs you wish to apply to before you submit your application. Further information is available on our website at:

www.fh-koeln.de »Studienangebot / Bewerbung



Additional Information



VISA

University applicants from the following countries may enter Germany without a visa: EU citizens, Andorra, Australia, Honduras, Iceland, Israel, Japan, Canada, Republic of Korea, Liechtenstein, Monaco, New Zealand, Norway, San Marino, Switzerland, and USA.

Students from these countries need a valid passport or personal identity card. You must apply for a residence permit for education purposes at the Ausländerbehörde (public authority for alien affairs) in Germany within the first three months of your stay. The Ausländerbehörde's jurisdiction depends on your place of residence in Germany. EU citizens are exempt from this rule, they do not have to apply for a residence permit.

University applicants from all other countries need a visa to enter the country. An application for this visa must be submitted to the appropriate agency abroad (embassy or consulate general) in the applicant's home country. You will need the admission letter from the Fachhochschule Köln for your application.

When you apply for your visa, you must provide proof of financial responsibility for the first year of study. Please note that only the appropriate diplomatic mission can provide you with authoritative information about the required documents.

On the website of the Auswärtiges Amt (Federal Foreign Office) you will find information about entry requirements of the respective countries and an overview of all German diplomatic missions with their respective areas of responsibilities.

@ www.auswaertigesamt.de

Please note that you must apply for a student or university applicant visa. A so-called "tourist visa" may not be converted to a student or university applicant visa in Germany.

HOUSING

Most dormitories are managed by the Kölner Studentenwerk. You can apply for a room there online.

www.kstw.de »Wohnen »Online-Bewerbung



Contact

Kölner Studentenwerk
Universitätsstraße 16
50937 Köln
Telefon: +49 (0)221 / 94 26 52 10
www.kstw.de

Please note that an application is not a guarantee for a dormitory space due to high demand. However, the earlier you send in your application, the higher your chances are to receive a dormitory space.



© iStock

University Attendance Costs



TUITION FEES AND SEMESTER FEES

The Fachhochschule Köln will **no longer charge tuition fees** starting with the 2011/2012 winter semester.

All students pay a **semester fee** of approx. €220, which includes a semester pass for local public transportation in the entire state of North Rhine-Westphalia.

LIVING EXPENSES

Living expenses of course strongly depend on your personal standards and needs. For planning purposes, you should calculate monthly expenses in the amount of **€700-800**.

A room or apartment in the dormitory is usually the cheapest option and costs between €200-300 per month. On the private housing market, the average monthly rent in Cologne including all utilities (such as heating, water) is about €300-400. In Gummersbach, accommodations tend to be a little cheaper: monthly rent with utilities included range from €250 to €350.

FINANCING YOUR STUDIES

The universities assume that international students can fully finance their studies. The Ausländerbehörde requires a proof of financial responsibility before a residence permit is issued. Financial proof must also be submitted for the duration of the required internship that takes place before students commence their studies.

You should never assume that you can finance your studies in Germany through employment. **Work permits are usually issued for no more than 90 full days or 180 half-days per year.**

BAFÖG

German citizens and foreigners who are eligible according to § 8 of the Bundesausbildungsförderungsgesetz (BAföG) are entitled to financial aid.

www.das-neue-bafoeg.de



SCHOLARSHIPS

The Deutsche Akademische Austauschdienst (German Academic Exchange Service, DAAD) and some other organizations issue a limited amount of scholarships. Students can normally only apply for them in their home country through the appropriate ministries or diplomatic missions of the Federal Republic of Germany.

www.daad.de »Informationen für Ausländer »Förderung



www.stipendienlotse.de »zur Stipendien-Datenbank



Please visit the International Office for personal advising sessions for university-issued financial aid.

WEBSITES OVERVIEW

Fachhochschule Köln.....	www.fh-koeln.de
International Office.....	www.international-office.fh-koeln.de
Visas.....	www.auswaertigesamt.de
Information about university locations.....	www.daad.de
Evaluation of high school and university diplomas.....	www.anabin.de
Uni-assist application process.....	www.uni-assist.de
Kölner Studentenwerk (dormitories).....	www.kstw.de
Exam of German as a foreign language.....	www.testdaf.de

VISIT US

Fachhochschule Köln | Campus Südstadt (GWZ)
Claudiusstraße 1 | 50678 Köln

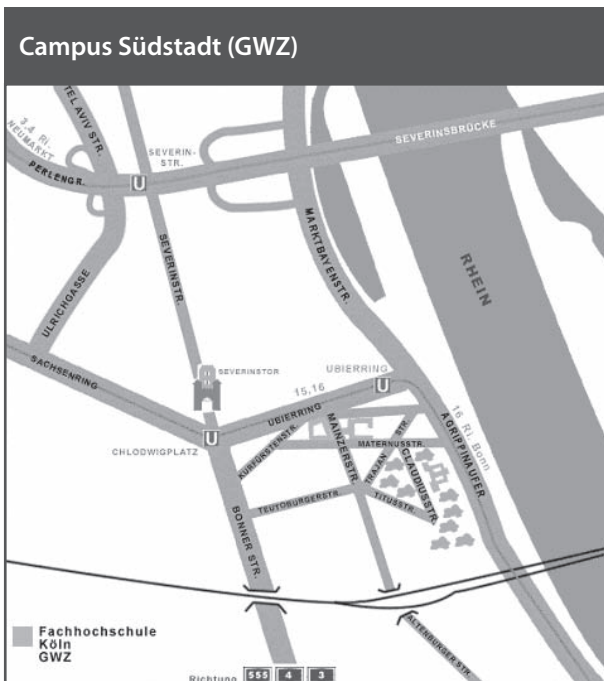
Public Transportation:
Tramlines 15, 16 to Ubierring stop
Bus lines 132, 133 to Chlodwigplatz stop

Fachhochschule Köln | Campus Deutz (IWZ)
Betzdorfer Straße 2 | 50679 Köln

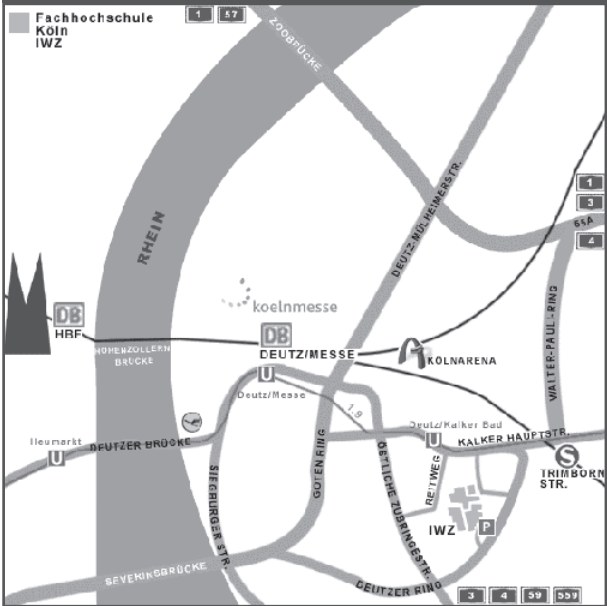
Public Transportation:
Tramlines 1, 9 to Deutz-Kalker Bad stop
Bus line 153 to Deutz-Kalker stop

Fachhochschule Köln | Campus Gummersbach
Steinmüllerallee 1 | 51643 Gummersbach

Public Transportation:
Regional train (RB25) from Köln HBF (Cologne Central Station) or Deutz station to Gummersbach stop, followed by a 5-minute walk



Campus Deutz (IWZ)



Campus Gummersbach





Fachhochschule Köln
Cologne University of Applied Sciences

International Office

www.international-office.fh-koeln.de

01 Department of Applied Social Sciences

02 Department of Cultural Studies

03 Department of Information and Communication Sciences

04 Department of Economics

05 Department of Architecture

06 Department of Civil Engineering and Environmental Technology

07 Department of Information, Media and Electrical Engineering

08 Department of Vehicle Systems and Production

09 Department of Plant, Energy and Mechanical Engineering

10 Department of Computer Science and Engineering Sciences

11 Department of Applied Natural Sciences

Institute for Technology in the Tropics (ITT)

